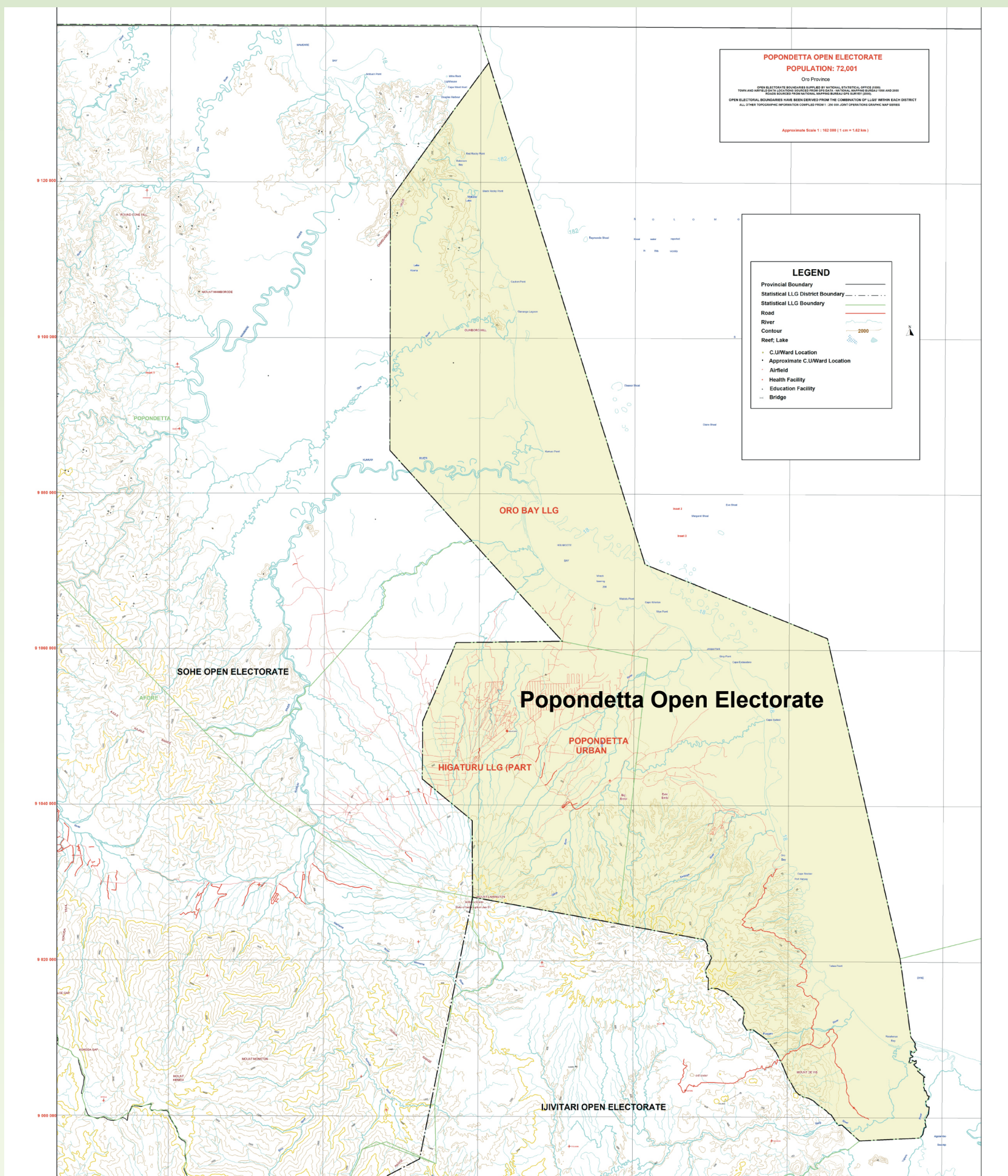


## Electoral Boundary Changes for 2022 National Election

### Popondetta Open Electorate

**Popondetta** is a new Open Electorate Northern Province, which includes Oro Bay LLG and Popondetta Urban LLG. Wards 22-28 of Higaturu LLG (from Sohe) have also moved to Popondetta Urban LLG in the new Popondetta open electorate. Wards 1-21 of Higaturu have remained in Sohe. Previously all these LLGs were in Ijivitari Open Electorate.

Check this map of the new electoral boundaries to see which Open Electorate you will be voting in at the 2022 National Election.



**MY COUNTRY, MY RIGHT TO VOTE FOR A HEALTHY NATION**

Authorised by the PNG Electoral Commission

